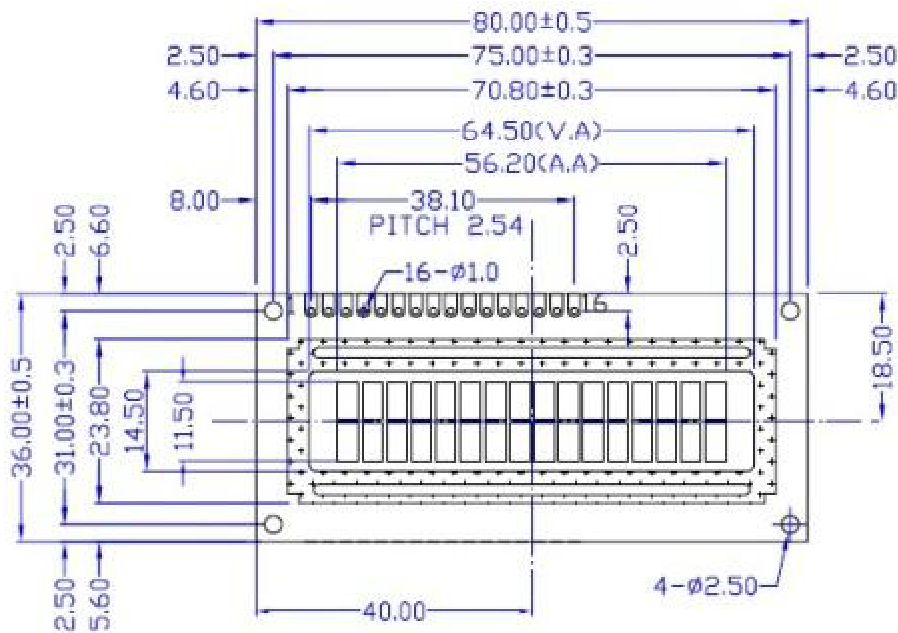


1602A LCM Specification

◆Pin configuration:

No.	Sign	pin instruction	No.	Sign	Pin instruction
1	VSS	power ground	9	D2	Data
2	VDD	power supply anode	10	D3	Data
3	VL	LCD bias voltage input	11	D4	Data
4	RS	data/order choose	12	D5	Data
5	R/W	read/write control sign	13	D6	Data
6	E	enable sign	14	D7	Data
7	D0	Data	15	BLA	backlight anode
8	D1	Data	16	BLK	backlight cathode

◆Outline size:

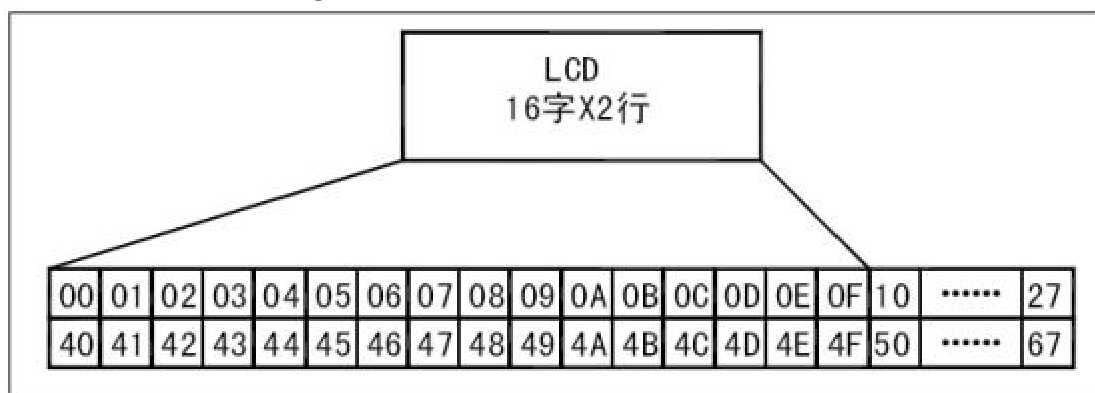


◆ Instruct code instruction & Basic operate process:

There are 11 control instruction in internal controller of the LCD module, as figure below shows.

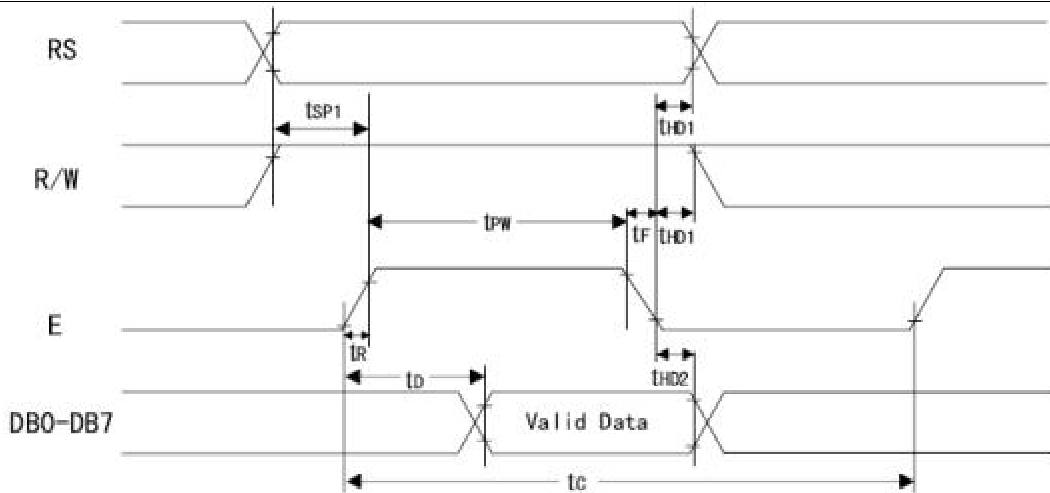
NO.	INSTRUCT CODE	RS	R/W	D7	D6	D5	D4	D3	D2	D1	D0
1	Display clearing	0	0	0	0	0	0	0	0	0	1
2	Cursor returns	0	0	0	0	0	0	0	0	1	*
3	input model	0	0	0	0	0	0	0	1	I/D	S
4	Display on/off setting	0	0	0	0	0	0	1	D	C	B
5	Cursor or character shifting	0	0	0	0	0	1	S/C	R/L	*	*
6	function	0	0	0	0	1	DL	N	F	*	*
7	character storage mapping	0	0	0	1	character storage mapping					
8	datas storage mapping	0	0	1	Display address of data memory						
9	Checking busy sign	0	1	BF	Address of counter						
10	Write datas to CGRAM or DDRAM	1	0	Writing datas							
11	Read from CGRAM or DDRAM	1	1	Reading data							

◆ RAM Address list (as figure below shows)



◆ Control interface process instruction:

1. Read timing sequence



2. Write time sequence

